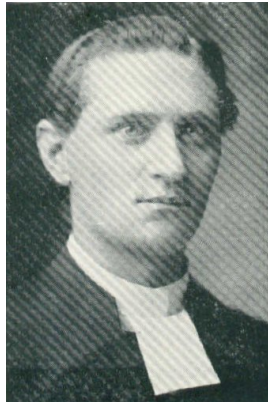


## The Early Beginnings

1898-1906

compiled by Nancy Marks



Rev AE Gustafson

## Significant Events

- 1898 Construction on first church on Alder- 32'x60" and 14 ft high, having electric wiring and a kitchen
- 1898 Our ministry extended to Milltown and Hamilton, MT  
  
Church services began to evolve from Swedish to English. Confirmation classes first taught in English
- 1923 The Montana District meeting was held in Missoula in connection with 25<sup>th</sup> Anniversary
- 1929 New Constitution framed. The name changed to "The Evangelical Lutheran Church in Missoula. The name later changed to Immanuel

## History of Immanuel 1914-1906

*In 1943, Carl Renhard<sup>1</sup> wrote this short history of the first 45 years of Immanuel's history in his book "Fifty Years of the Columbia Conference 1893-1943"*

Nestled securely against the rugged Rockies on the North and East with the Bitter Root Mountains towering to the South and West and spreading itself on the small plain between these two great mountain ranges lies Missoula, the "Garden City of Montana." The little metropolis is important as a railroad, farm marketing and lumber manufacturing center. It is also the home of the University of Montana.

On October 20, 1898, the first organizational meeting took place in the home of Mr. and Mrs. John Berglin, with thirteen persons present. The first church name which was adopted at this meeting was: "The Swedish Evangelical Lutheran Congregation". The Rev. A.E. Gustafson of Helena, Montana, presided and continued to lead the small congregation in occasional services until January of 1900. After the first congregational meeting, eleven others signed the charter membership roll.<sup>1</sup>

*The names of the charter members who signed the membership roll were listed as follows: Gus Broman, Nels Peterson, John Berglin, Ole Johnson, William Anderson, Mrs. John Berglin, Mrs. John A Swanson, Mrs. John Moller, Mrs. Fred Anderson, Mrs. Ole Johnson, Miss Hilda Olson, Miss Lydia Hemgren, Miss Augusta Anderson, Fred Anderson, A.E. Larson, John Hemgren, John a Swanson, Mrs. John Hemgren, Mrs. Semmons, Mrs. Hanna Moller, Mrs. Tilda Peterson and Miss Anna Peterson<sup>2</sup>*

The infant Congregation met during the two years only monthly and in the homes of the members since there was no church available to them. The records show that several attempts were made to purchase church buildings from other denominational bodies, however, no purchase was made.

On January 22, 1900, pastor Gustafson announced his resignation. Sufficient progress had not been made to continue the work and nothing more was attempted in five years.

The next minutes indicate that on February 16, 1905, a student named H. F. Johnson was temporarily in charge of preaching services and it was under his leadership that Rev. Herman Lind of Anaconda was called to Missoula to organize the dormant congregation. A new membership list was approved as constituting the communicant status and action was taken to recognize the constitution and the act of incorporation which had been formulated by the earlier congregational organization. It was also decided at this meeting that the congregation would petition the Augustana Synod for membership in that Body. Thus the days of independent action were over and the church became a working part of the Church-at-large. This arrangement continued until 1946 when the congregation decision was made that our parish would become a self-sustaining parish.

<sup>1</sup>Renhard, Carl "Fifty Years of the Columbia Conference" 1893-1943; 1943

<sup>2</sup>Immanuel Scrapbook, 100<sup>th</sup> Anniversary Historical Summary

**Pastors 1905-1916**

- A.P.G Anderson July 1905
- A.V. Anderson July 1907
- C. J. Bengston August, 1910
- W. C. Ekeberg April 1912
- T.V. Anderson July 1916

# History- continued



ELLEN ANDERSON JOHNSON - 2<sup>nd</sup> GENERATION  
w/ HUSBAND GEORGE JOHNSON

Ellen Anderson Johnson- 2<sup>nd</sup>  
generation with husband  
...Johnson



CHARTER MEMBERS  
1<sup>st</sup> GENERATION  
ALMA ANDERSON  
WITH ALFRED & ELLEN

Charter members 1<sup>st</sup>  
generation  
Alma Anderson with Alfred & Ellen



*Charter Members*  
 J.A. AND JOHANNA SWANSON'S FAMILY IN ABOUT 1917, taken in Missoula, Montana  
 Standing left to right:  
 GEORGE COLE, JOHN E. SWANSON, AMANDA SWANSON COLE, FRANK SWANSON, GEORGE  
 SWANSON, EMMA SWANSON STROTHMAN, AND HENRY STROTHMAN  
 Seated left to right:  
 LILLY SWANSON, JOHANNA SWANSON, GRANDCHILDREN BUD COLE, STANLEY COLE,  
 (NOT BY THE PHOTOGRAPHER) J & SWANSON AND MAY SWANSON (NOT BY)

**Charter Members : John & Johanna Swanson Family**

*Decedents of the charter members still members at Immanuel include Mr and Mrs John Swanson's grandson Gordon Swanson , his wife Ina and their children John, Linnea Kahler, Cheryl Galipeau and their children Stacey and Rebecca Kahler and Lindsay and Amy Gallipeau.*



**Charter member John A Swanson holding grandson Gordon E Swanson, 1920**

CHARTER MEMBER JOHN A. SWANSON HOLDING GRANDSON GORDON E. SWANSON 1920.